

ST-103D

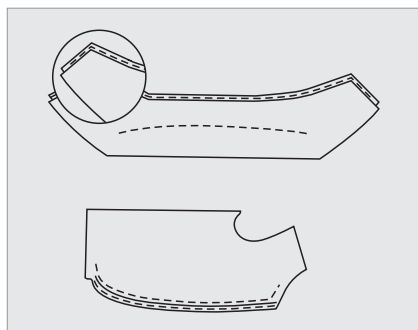
直驱门襟切口机

Direct Drive Placket Cutting Machine



用于西服前幅门襟止口
领襟止口及各类服装止口
用于不同厚度面料
此机全自动供油
标准止口3毫米

Use machine as scissor to improve speed. Different thickness of cloth can be cut out Supplying oil automatically Standard cutting thickness:3mm



ST-103D 自带剪刀功能，
专用于切门襟，可大大
提高工作效率。

ST-103D Comes with
scissors function,
dedicated to cutting
the placket, Can greatly
improve work efficiency.

